



**SDLG machines** are built to be like the people that own them: hardworking, genuine and reliable. Cost effective, robust machines with fuel efficient engines that are easy to operate and easy to maintain. And when you need parts or service, you can trust your dealership to deliver on the SDLG promise: **Reliability in Action.**



Congratulations SDLG for winning  
**EFQM Global Excellence Award**  
One of the top three quality awards in the world

**Member of the VOLVO Group Since 2007**

SDLG is member of the Volvo Group and one of the largest manufacturers of construction machinery in China, with a wide network of dealerships and service workshops throughout the world.

**Shandong Lingong Construction Machinery Co., Ltd**

Add: Lingong Industry Park, Economic Development Zone, Linyi, Shandong, P, R, C.  
Tel: 0086-531-66590966 Fax: 0086-531-66590959 E-mail: export@sdlg.com

**Reliability in Action**



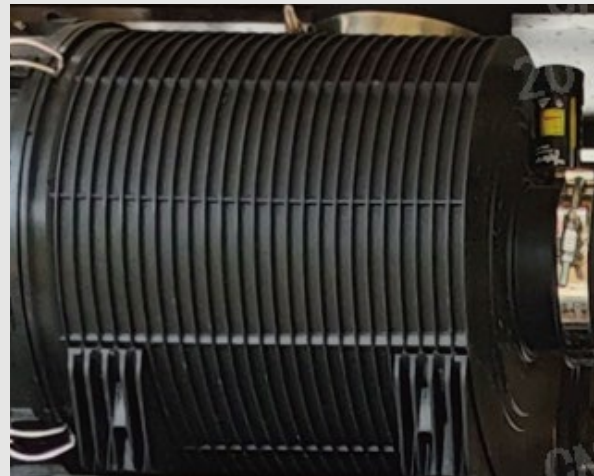
**L948H**  
**Wheel Loader**





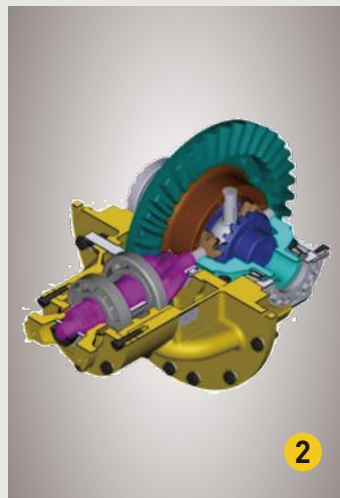
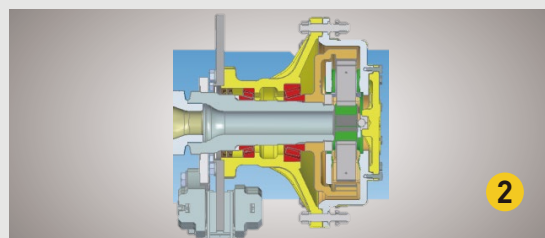
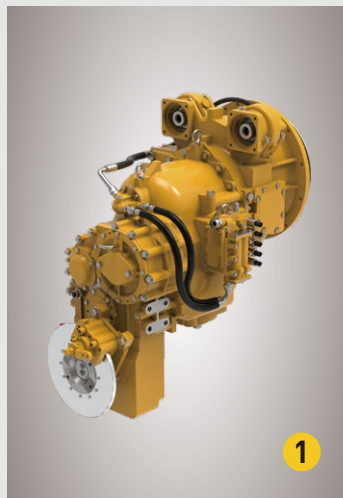
## Strong power

- 1 Cummins B6.7 engine with DOC+DPF+SCR aftertreatment . The engine has strong power, low noise and reliable performance
- 2 Equipped with Donaldson air filter , high filtration precision, with differential pressure indicator, air filter clogging timely warning, convenient for maintenance



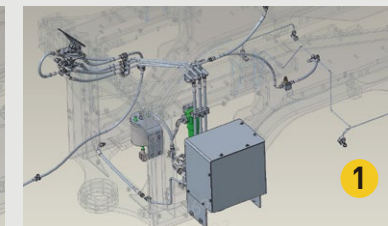
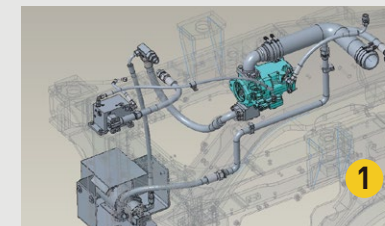
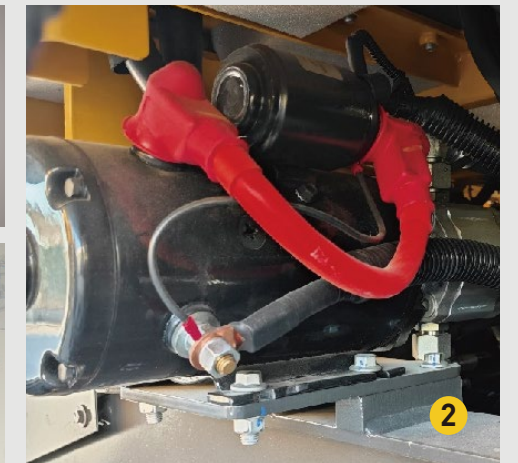
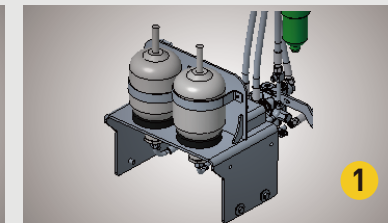
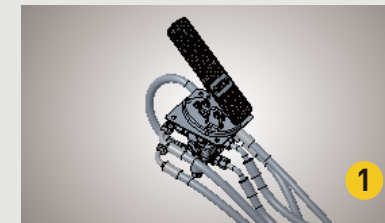
## Transmission efficiency

- 1 Equipped with VRTE205 automatic gearbox, F4R4 gears automatic switching , and FNR integrated to the right control box, simplify the left hand operation, greatly improve the operator's comfort and production efficiency, reduce the fatigue of the operation. At the same time with power cut-off function, reliable and durable.
- 2 SDLG strengthened axle hub reduction four planetary wheels structure, overall reliability is improved by 60%



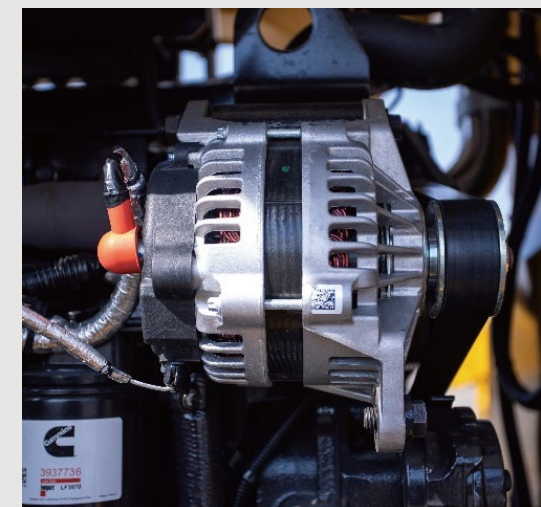
## Brake safety

- 1 Full hydraulic double circuit service brake, MICO brake valve and charging valve, good braking effect, high braking reliability
- 2 CE products are equipped with emergency steering as standard, which is activated automatically when the steering fails or can be manually switched on to ensure steering safety as a priority



## Electrical system intelligence and reliability

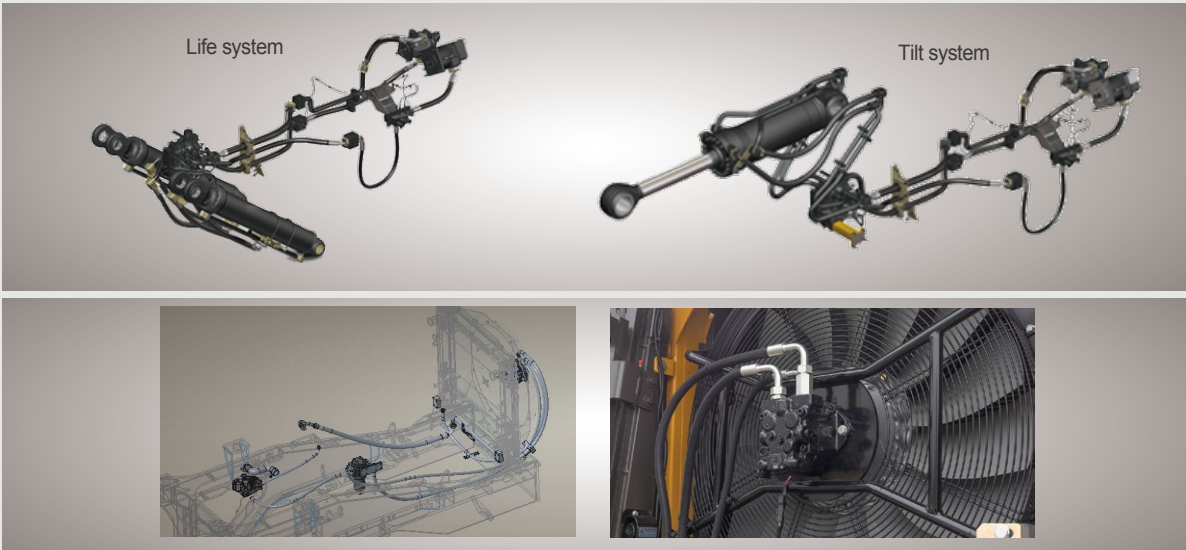
- 1 The engine and transmission system are controlled by intelligent programs to identify potential problems in time, Multiple protection of electrical parts, connectors with IP67 waterproof grade, ensure electric system outstanding reliability and durability.





Variable hydraulic efficiency and energy saving

- 1 Single-variable combined flow hydraulic system ensures the demand of large flow rate of the hydraulic system.high operating efficiency and low tuel consumption
- 2 Idependent cooling system adopts gear pump and piston motor, the fan speed is adjustable according to the temperature, energy-saving and comfortable.The fan can realise the function of forward and reverse rotation, convenient for dust removal



Comfortable to drive and easy to operate

- 1 H series FORPS&ROPS cab, spacious and wide field of view, standard reverse camera ,Multi-speed wiper, warm and cold storage box, excellent air conditioning system,enhance operator comfortable
- 2 Keypad + dashboard manipulation, operation is comfortable and convenient. All important information is monitoring and centrally located in the operator's field of vision
- 3 Pilot three-handle integrated control, integrated FNR, KD function,reduce operator fatigue and improve productivity



L948H

Equipment and Features

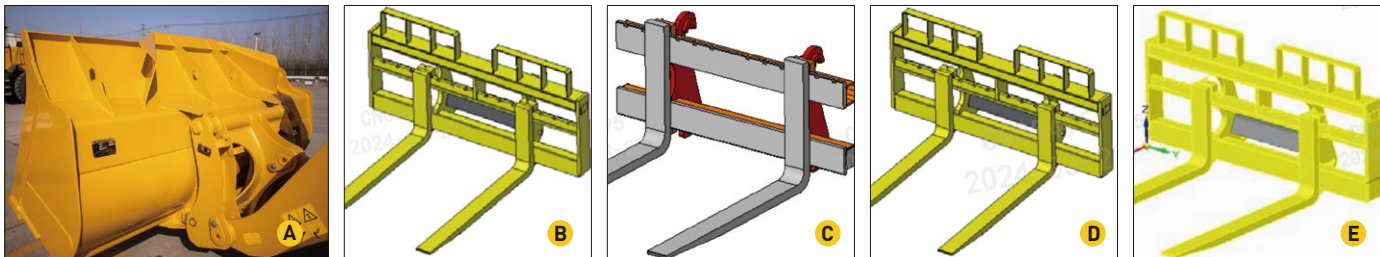
Standard configurations

#	Disposition
1	Cummins B6.7
2	SDLG VRTE205
3	SDLG A504E
4	Pilot three handle
5	Standard Arm
6	3-Spool Value
7	Single brake pedal
8	20.5-25-16PRTL-TL612 (eco-friendly)
9	FOPS&ROPS cab
10	AC
11	Start interlocking
12	Tachometer
13	fuel tank with a lock
14	Adjustable steering column
15	Radio
16	Rotate beacon
17	GP bucket 2.5×2762 (Quick change, wear-resistant plate, anti falling material)

Optional equipment

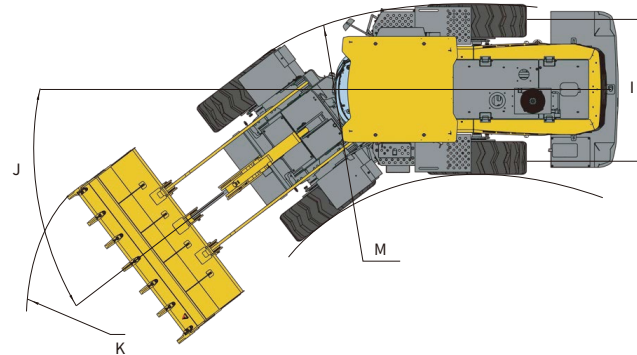
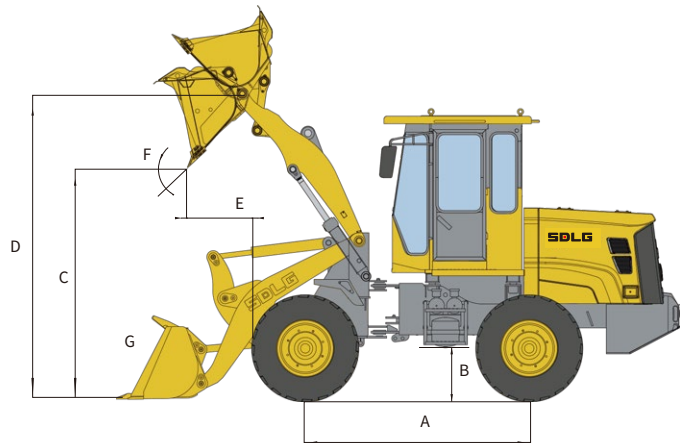
Quick change as standard configuration, convenient and quick change of a variety of auxiliary attachments

#	Disposition	
1	LM bucket 2.5×2915 (Quick replacement and anti dropping materials)	A
2	Pallet fork (quick change)1250×2130	B
3	Pallet fork (quick change)1500×1780	C
4	Pallet fork (quick change)1800×2140	D
5	Pallet fork (quick change)1800×2320	E



# L948H

## Main Parameter



Item	Specifications
Overall dimension	
L×W×H	7900x2762x3400mm
Wheel base(A)	3100mm
Min. ground clearance(B)	440mm
Max. dumping height(C)	2775mm
Lifting height(D)	3840mm
Dumping distance(E)	1255mm
Dumping angle(F)	-45°
Bucket rollback at ground level(G)	43.5°
Wheel tread(I)	2054mm
Steering angle(J)	37°
Horizontal crossing radius(K)	6525mm
Min.turning radius(M)	5675mm

Item	Specifications
Overall parameters	
Bucket capacity	2.5m <sup>3</sup>
Rated load	4500kg
Operating weight	14500kg
Max.tractive force	110kN
Max.breakout force	≥125kN

Item	Specifications
Engine	
Model	B6.7
Type	Inline,water-cooled,six cylinder,direct injection
Rated power	129kW
Rated speed	2200r/min
Engine displacement	6700ml
Cylinder bore/stroke	107/124mm
Max.torque(N.m)/speed(r/min)	881n.m/1300r/min
Emission standard	Europe Stage V
Min.fuel-consume ratio	195g/kW.h
Transmission system	
Traveling brake type	Single-stage three-element hydraulic torque converter
Swing mode	Axis-fixed electric-hydraulic transmission
Gears	Forward 4 reverse 4
Speed at forward/ reverse gear I	0~6.9km/h
Speed at forward/ reverse gear II	0~12.4km/h
Speed at forward/ reverse gear III	0~26.3km/h
Speed at forward/ reverse gear IV	0~37.5km/h

Item	Specifications
Hydraulic system of working device	
Type	Hydraulic pilot control
Total time	≤11.06s
Brake system	
Service brake type	Full hydraulic caliper disc brake
Parking brake type	Electric liquid-controlled caliper disc brake
Steering system	
Type	Load sensing full hydraulic articulated steering
System pressure	19MPa
Fill capacity	
Fuel	200L
Hydraulic oil	128L
Engine	13L
Transmission	17+5L
Drive axle	Forward16+10L, reverse16+10L
Braking system	4L

\* The right of final interpretation of the abovementioned parameters shall be reserved by SDLG. No further notice will be given in case of any change, Illustrations in the text may not always be the standard illustrations for this model.